

**RESOLUTION NO. 16-20**

**A RESOLUTION OF THE GOVERNING BODY OF  
CONVERSE COUNTY DECLARING THE  
ENLARGEMENT OF SUNDANCE MEADOWS WATER  
DISTRICT AFTER A PETITON WAS FILED BY  
LANDOWNERS**

**WHEREAS**, the Board of County Commissioners of Converse County, Wyoming has been petitioned by the landowner and the Board of Directors for the enlargement of the Sundance Meadows Water District; and

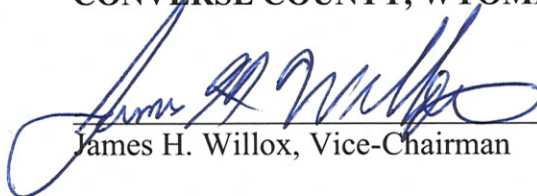
**WHEREAS**, the Board accepted the petition to enlarge the boundaries of the Sundance Meadows Water District as approved by the Wyoming Department of Revenue.

**NOW, THEREFORE, BE IT RESOLVED**, that the Sundance Meadows Water District be and is hereby enlarged to include the following tracts and lots of land as described in Exhibit "A", attached and included herein, and as further described below:

Tract 4, Lot 5, South Douglas Addition, Converse County, Wyoming

**PASSED, APPROVED AND ADOPTED** this 21<sup>st</sup> day of July 2020.

**BOARD OF COMMISSIONERS  
CONVERSE COUNTY, WYOMING**

  
James H. Willox, Vice-Chairman


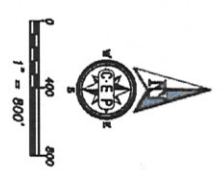
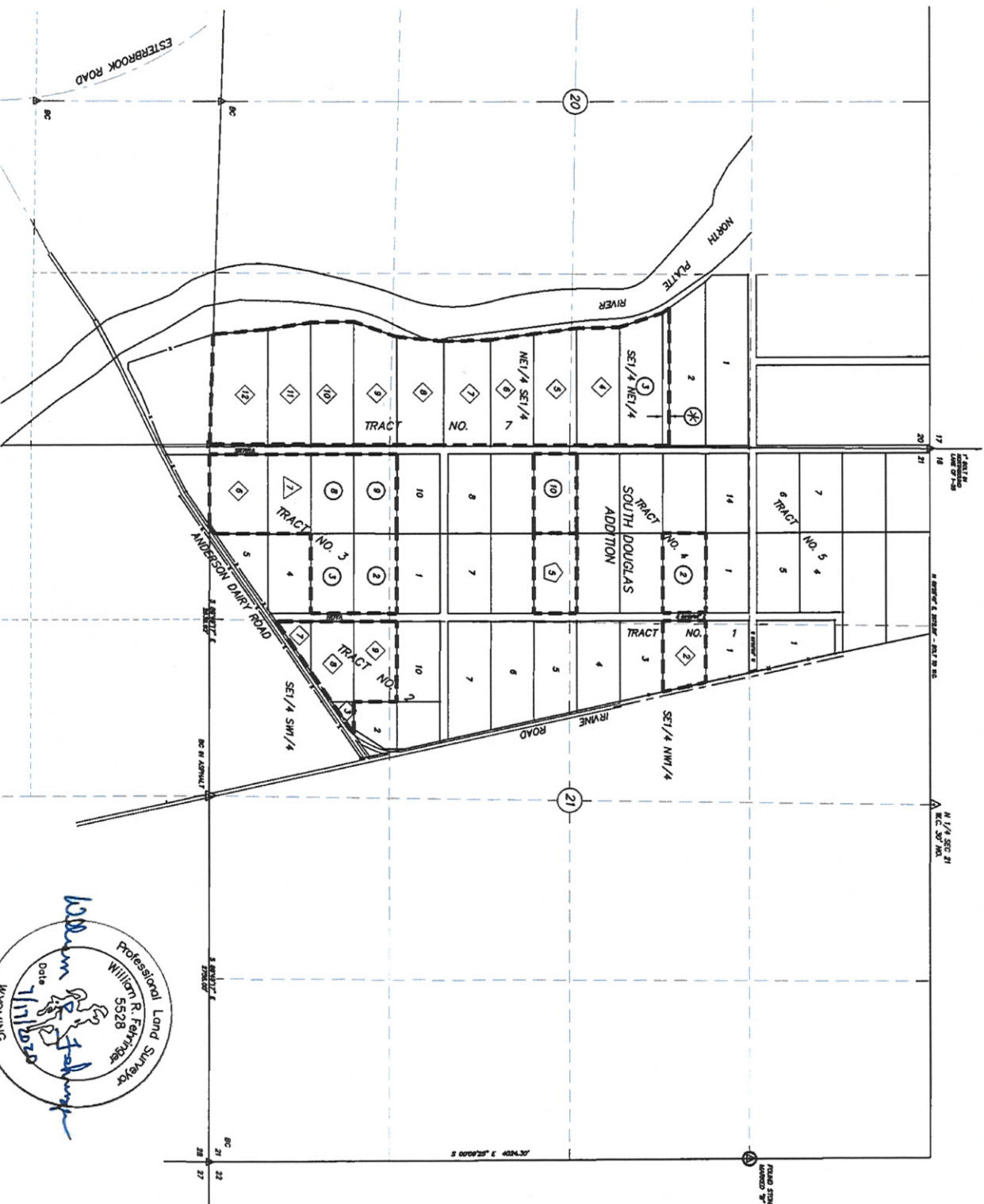
**ATTEST:**   
Karen Rimmer, Converse County Clerk



EXHIBIT "A"



LEGEND

- ▲ FOUND MONUMENT, ID AS SHOWN
- ⊠ MEASURED DATA
- ④ INDICATES LOT INCLUDED IN ORIGINAL SUNDANCE MEADOWS WATER DISTRICT, CONVERSE COUNTY COMMISSIONERS RESOLUTION NO. 13-06, APPROVED MAY 3, 2008
- ③ INDICATES LOT INCLUDED IN ENLARGEMENT OF SUNDANCE MEADOWS WATER DISTRICT, CONVERSE COUNTY COMMISSIONERS RESOLUTION NO. 23-08, APPROVED DECEMBER 2, 2008.
- ② INDICATES LOT INCLUDED IN ENLARGEMENT OF SUNDANCE MEADOWS WATER DISTRICT, CONVERSE COUNTY COMMISSIONERS RESOLUTION NO. 22-09, APPROVED DECEMBER 1, 2009.
- ① INDICATES LOT INCLUDED IN ENLARGEMENT OF SUNDANCE MEADOWS WATER DISTRICT, CONVERSE COUNTY COMMISSIONERS RESOLUTION NO. 16-20, APPROVED JULY 21, 2020.

⊠ INDICATES ALL LOTS INCLUDED IN THE SUNDANCE MEADOWS WATER DISTRICT.

⊛ INDICATES THE SOUTH 49.75 FEET OF LOT 2, TRACT 7 AS PER THE WARRANTY DEED RECORDED 9/14/2005 IN BOOK 1259, PAGE 682.

SUNDANCE MEADOWS WATER DISTRICT

BOUNDARY MAP

PORTIONS OF THE SOUTH DOUGLAS ADDITION PLAT SIGNED SEPT. 11, 1920 FILED IN CABINET 1, SLIDE 57 SECTIONS 20 & 21 T.32N., R.71W., 6TH P.M. CONVERSE COUNTY, WYOMING JULY, 2020



Civil Engineering Professionals, Inc.

FILE: WLS 898-021