

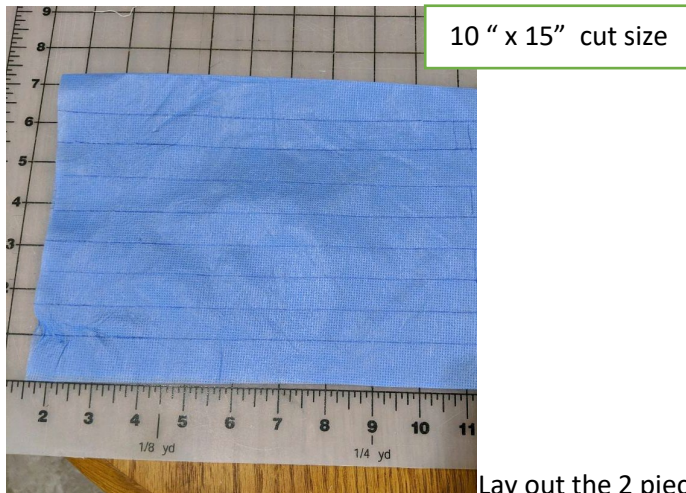
## Surgical Face Mask with Ties

### What you will need

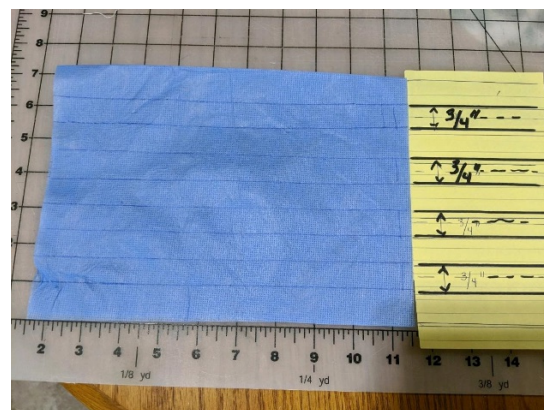
- 10" x 15" rectangle from blue surgical drape
- 2 – 60 " 3/8" bias tape for ties
- Nose piece – 2" from pipe cleaner or flat metal flexible piece

Size: 1 size large    **Finished size: 7 1/2" x 13" (approximately)**

1. Put right sides of fabric together or can cut on the fold

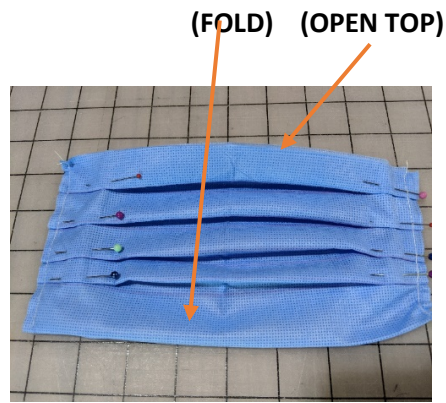


Lay out the 2 pieces and mark 4 sets of lines for pleats



### PLACING THE TIES: CUT 2- 30" BIAS TAPE

2. Match top line to its counterpart to make a fold and pin the edge.
3. Sew a baste along the edges to hold the folds and then attach the binding (**only if you are making a mask**)



**FOR THE NOSE PIECE:**

(can use a covered pipe cleaner, a covered bread closure, similar pliable item, but must be covered for it to be sewn into the seam)

1. ON THE OPEN SIDE OF THE MASK, PLACE A COVERED NOSE PIECE IN THE INSIDE MID-SECTION OF THE MASK. FOLD  $\frac{1}{4}$ " SEAM, PIN
2. Sew across the top. This seam will hold the pliable nose piece in place.



**FOR TIES TO THE MASK**

1. Cut 2-60" of  $\frac{1}{4}$ " bias tape. Place evenly along the edges of the mask with right side out (see picture above)
2. Pin the bias tape to the edge and sew.



4. Sew the edges of the mask.
8. Topstitch around the edge of the mask twice (double stitch =====)