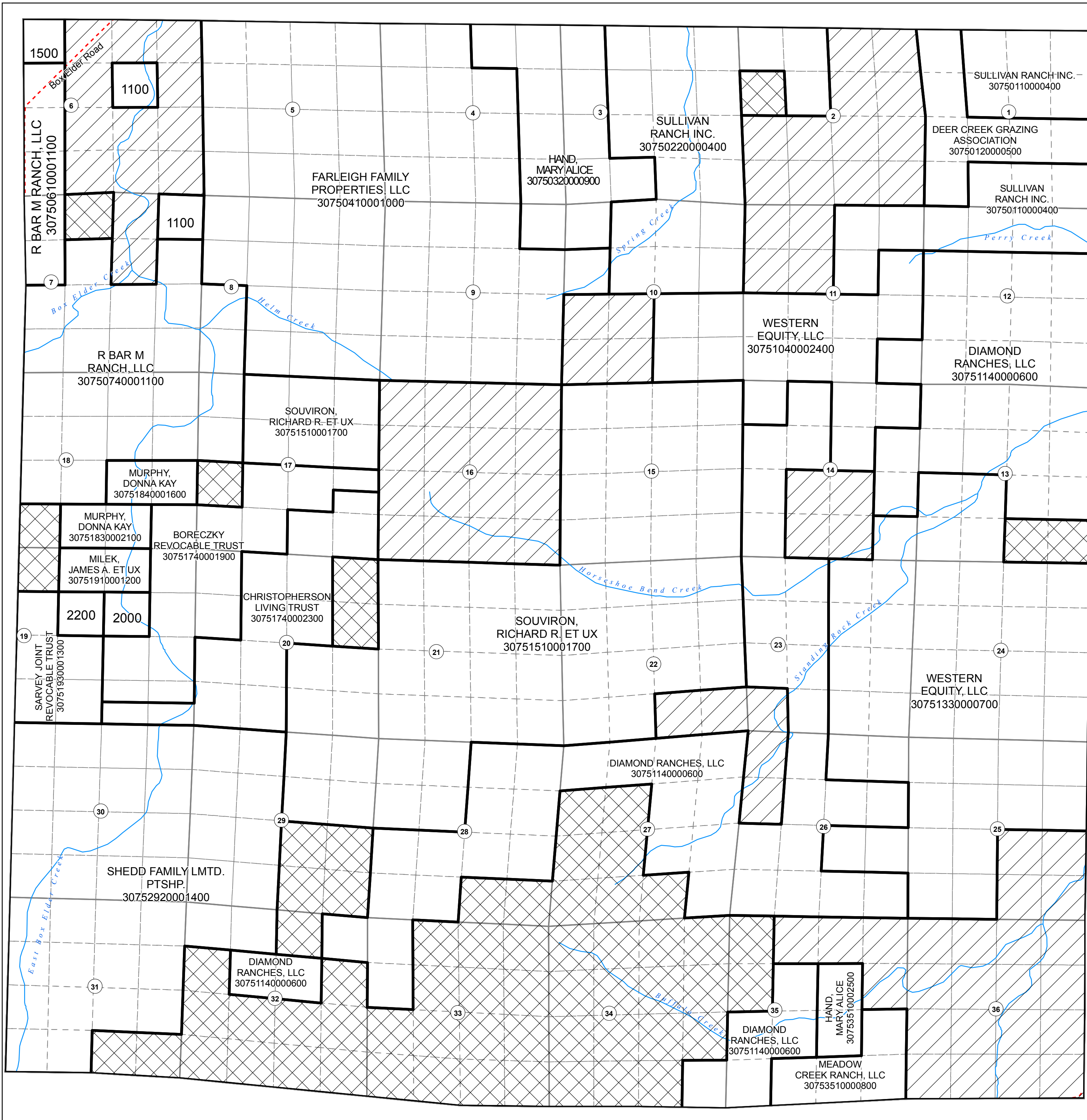


030N 075W

SCALE 1" = 2,000'

Parcel Number	Name	Sort_PIN
30750110000400	SULLIVAN RANCH INC.	400
30750220000400	SULLIVAN RANCH INC.	400
30750120000500	DEER CREEK GRAZING ASSOCIATION	500
30751140000600	DIAMOND RANCHES, LLC	600
30751330000700	WESTERN EQUITY, LLC	700
30753510000800	MEADOW CREEK RANCH, LLC	800
30750320000900	HAND, MARY ALICE	900
30750410001000	FARLEIGH FAMILY PROPERTIES, LLC	1000
30750610001100	R BAR M RANCH, LLC	1100
30750740001100	R BAR M RANCH, LLC	1100
30751910001200	MILEK, JAMES A. ET UX	1200
30751930001300	SARVEY JOINT REVOCABLE TRUST	1300
30752920001400	SHEDD FAMILY LMTD. PTSHP.	1400
30750620001500	SNO-SHOE RANCHES INC.	1500
30751840001600	MURPHY, DONNA KAY	1600
30751510001700	SOUVIRON, RICHARD R. ET UX	1700
30751740001900	BORECZKY REVOCABLE TRUST	1900
30751910002000	MILEK, JAMES A. ET UX	2000
30751830002100	MURPHY, DONNA KAY	2100
30751920002200	MILEK, JAMES A. ET UX	2200
30751740002300	CHRISTOPHERSON LIVING TRUST ET AL	2300
30751040002400	WESTERN EQUITY, LLC	2400
30753510002500	HAND, MARY ALICE	2500
307502200090100	FEDERAL	90100
307502100090200	STATE OF WYOMING	90200



VISUAL REFERENCE ONLY! All care has been taken to provide accurate data, but errors may exist. It is the user's responsibility to verify correctness of data. Please notify the Converse County GIS Department of any errors.

CONVERSE COUNTY GIS APRIL 2009

Legend

- FEDERAL
- STATE OF WYOMING
- CONVERSE COUNTY
- CITY OR TOWN OF
- MISC. (STATE ASSESSED)
- NON-PROFIT
- RELIGIOUS
- SCHOOL DISTRICT
- PRIVATE LAND OWNERSHIP
- SEE SUB PLAT BOOK